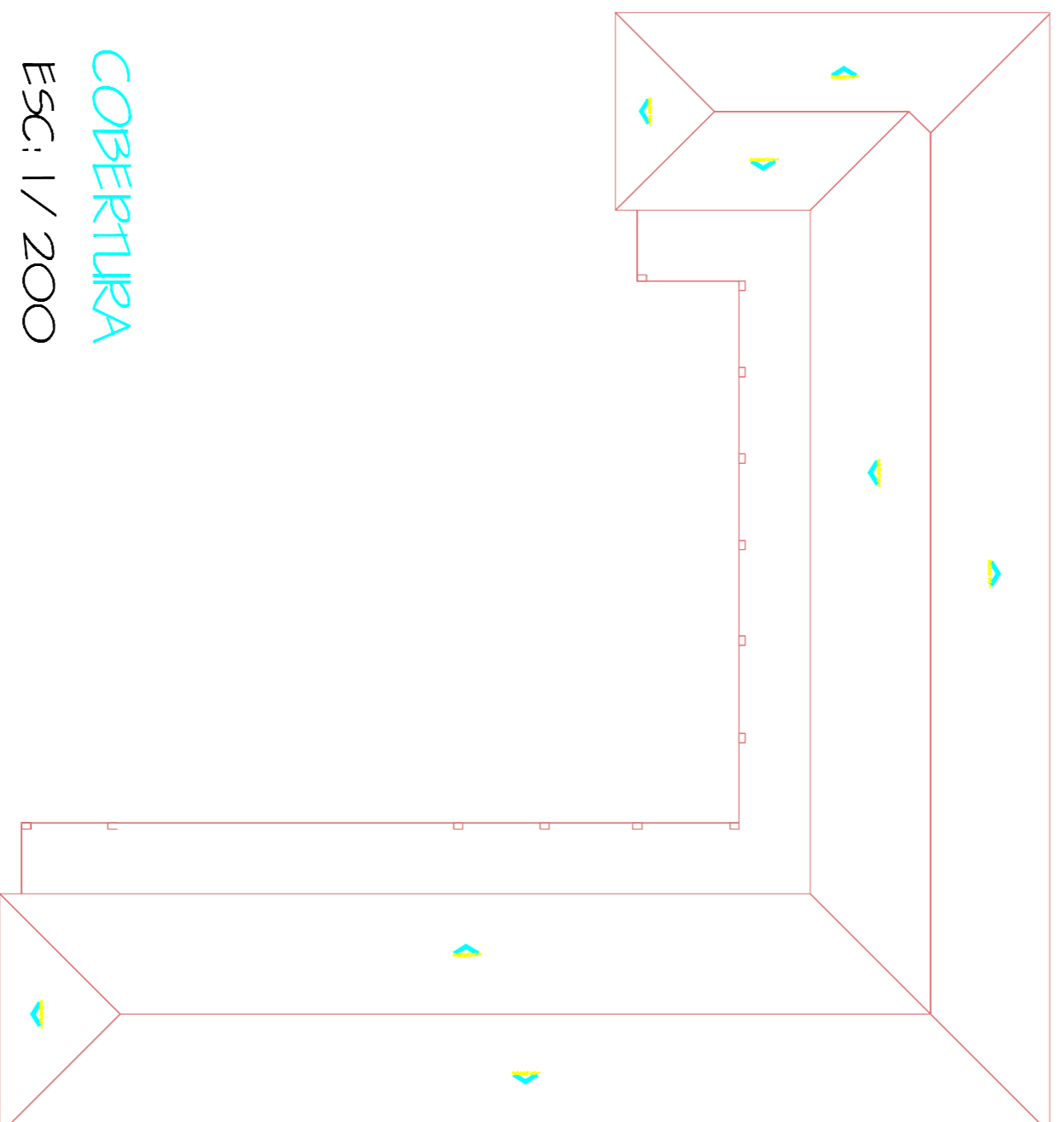
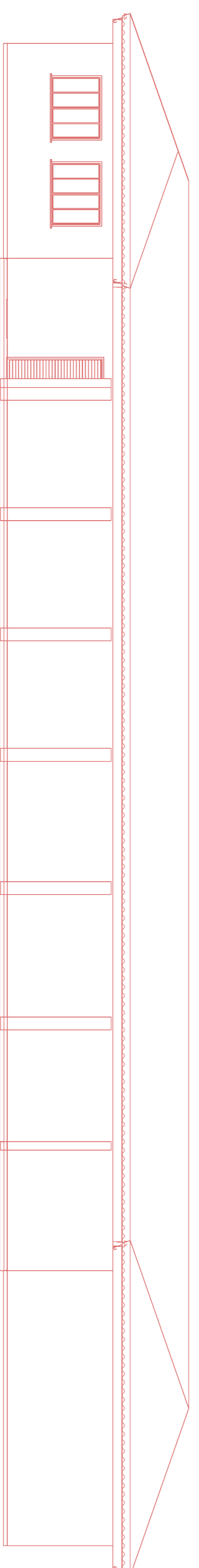


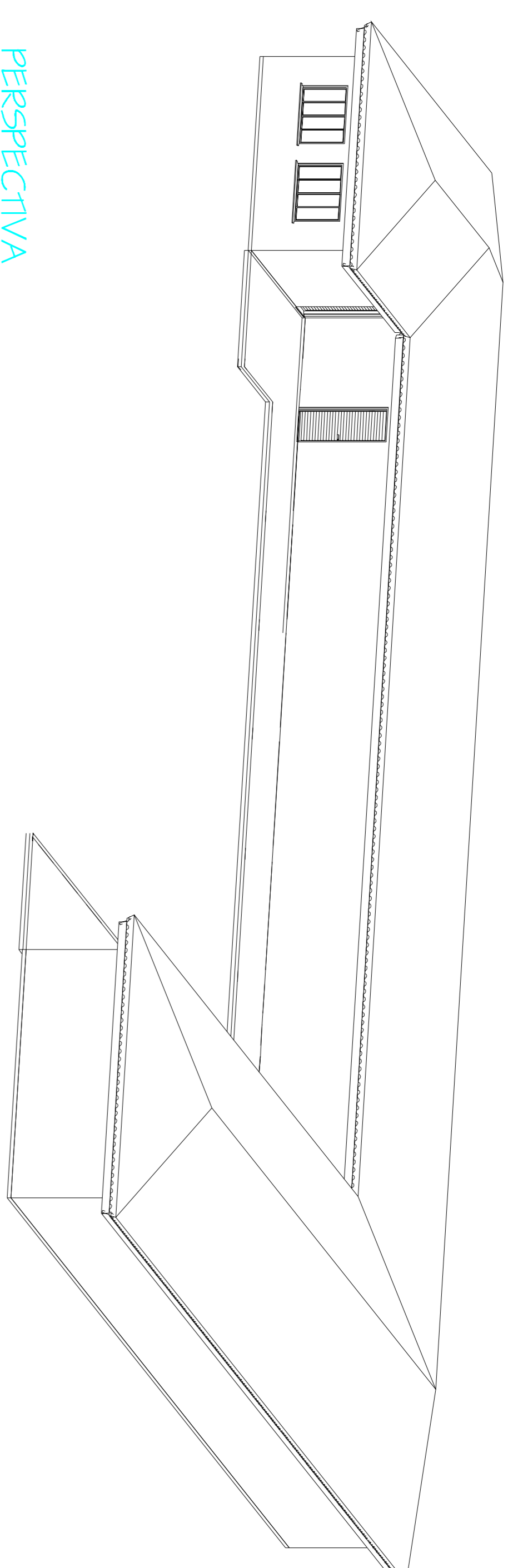
PLANTA BAIXA
ESC: 1/100



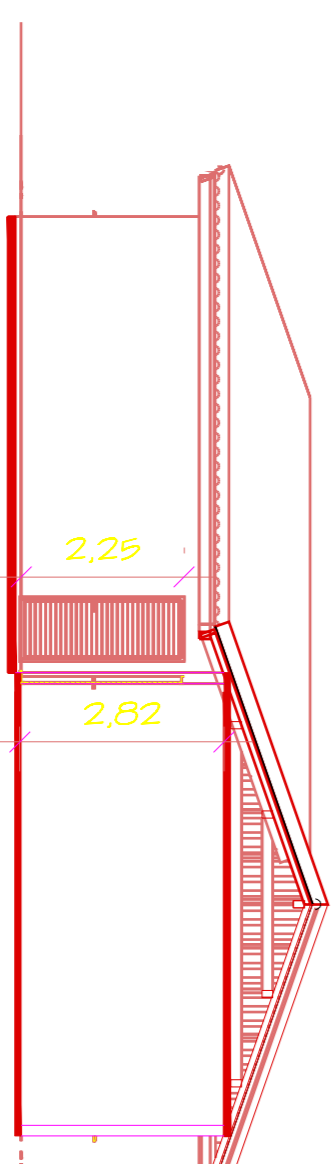
COBERTURA
ESC: 1/200



FACHADA
ESC: 1/100



PERSPECTIVA



CORTE A-B
ESC: 1/100

PREFEITURA MUNICIPAL DE
CACHOEIRA DE MINAS
PROJETO DE AMPLIAÇÃO

LOCAL: E.M. ANARDINA FRANCISCA DA COSTA

ENDEREÇO: BAIRRO ALTO DAS CRUZES

PREFEITO: CARLOS EDUARDO TENÓRIO DIONÍSIO

RESPONSÁVEL TÉCNICO:

ESCALA INDICADA DATA: 05/10/2015

ÁREAS

CONSTRUIDA: 479,18 m²

A AMPLIAR: 88,90 m²